

History

Japan Post Insurance Co., Ltd. was established as Kampo Co., Ltd. on September 1, 2006 under the Postal Service Privatization Act enacted in October 2005. During the period up to September 30, 2007, the Company prepared to launch operations as a life insurance company. On October 1, 2007, the Company changed

its trade name to Japan Post Insurance Co., Ltd.

Japan Post Insurance currently engages in the life insurance business and Postal Life Insurance management business under commission from the Management Organization for Postal Savings and Postal Life Insurance.

September 2006	Established Kampo Co., Ltd. under the Postal Service Privatization Act
October 2007	Changed trade name to Japan Post Insurance Co., Ltd. in line with commencement of life insurance business Started Postal Life Insurance management operations under commission from the Management Organization for Postal Savings and Postal Life Insurance
December 2007	Obtained approval for new operations (liberalization of investment products)
June 2008	Commenced commissioned sales of life insurance products for corporate clients (term insurance)
July 2008	Launched <i>Sono hi kara</i> , a new hospitalization rider
July 2009	Established branches in all prefectures through opening of the Nara Branch and Wakayama Branch
October 2011	JAPAN POST INSURANCE SYSTEM SOLUTIONS Co., Ltd. (current consolidated subsidiary) became a subsidiary
April 2014	Launched <i>Hajime no Kampo</i> , an educational endowment insurance
July 2014	Commenced handling commissioned sales of cancer insurance products for American Family Life Assurance Company of Columbus (Aflac)
September 2015	Obtained approval for commissioned sales of insurance products for corporate clients (general welfare group term insurance, etc.)
October 2015	Commenced sales of endowment insurance "New Free Plan (short-term premium payment)"
November 2015	Listed shares on the First Section of the Tokyo Stock Exchange

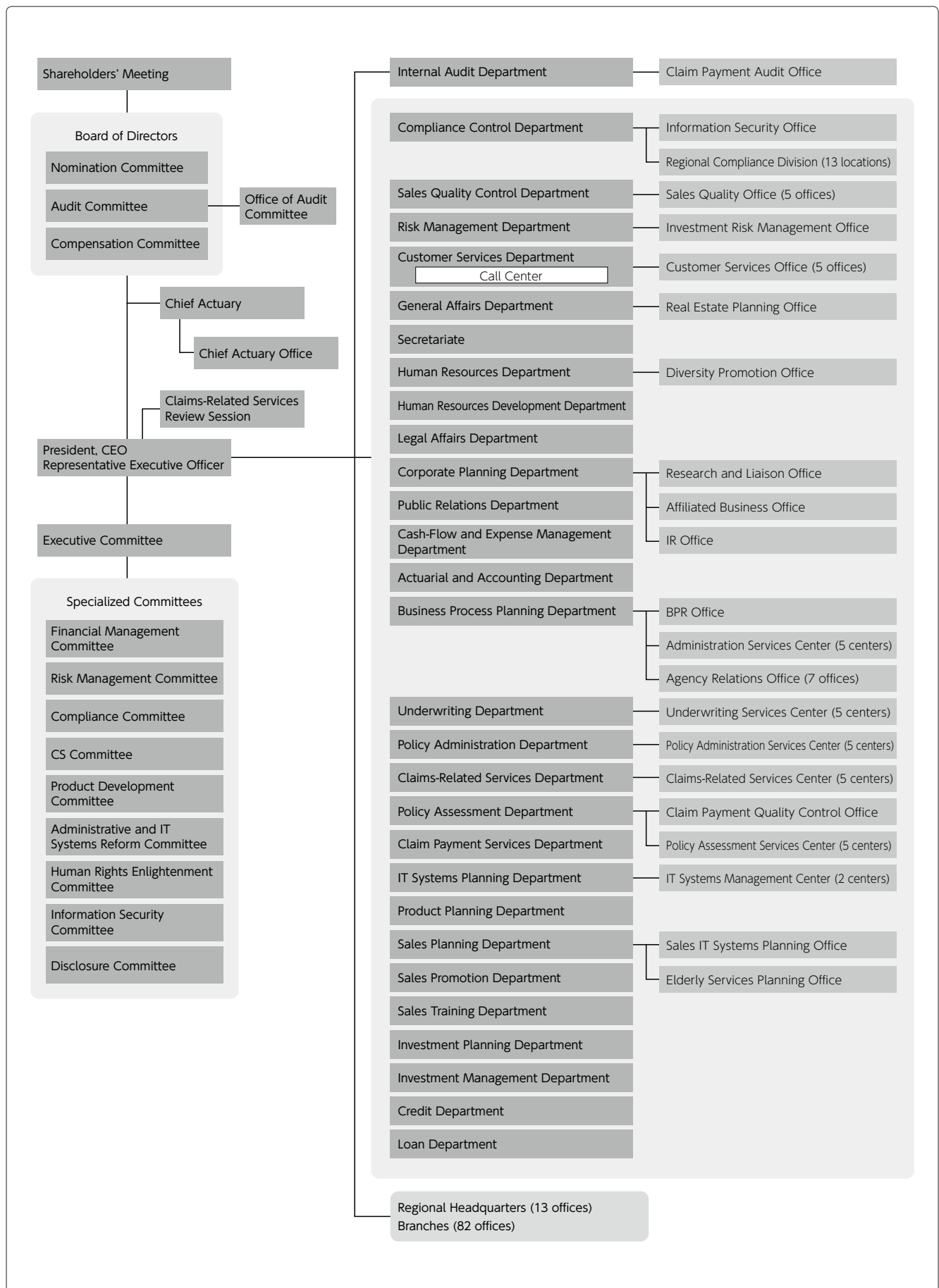
■ History of Postal Life Insurance

October 1916	Foundation of Postal Life Insurance business by the Ministry of Communications
October 1926	Foundation of postal annuity business by the Ministry of Communications
June 1949	Establishment of The Ministry of Posts and Telecommunications
January 2001	Creation of Postal Services Agency as part of realignment of government ministries
April 2003	Establishment of Japan Post

Major Businesses

- (1) Life insurance businesses
- (2) Agency or administration services for other insurance companies (including foreign insurance companies) and other financial services companies and loan guarantees and other businesses supplemental to previously mentioned businesses
- (3) Trading of Japanese government bonds, local government bonds and government-guaranteed bonds; accepting subscriptions for local government bonds, corporate bonds and other bonds; commissioned management and other businesses provided for under the Insurance Business Act; and other life insurance businesses not covered by the Insurance Business Act but legally permissible
- (4) Management of Postal Life Insurance Policies commissioned by the Management Organization for Postal Savings and Postal Life Insurance
- (5) Other business supplemental or related to previously mentioned businesses

Organization Chart



Paid-in Capital (As of September 30, 2015)

Month, Date, Year	Gain (loss) on investments	Gain (loss) on capital after contribution	Outline
October 1, 2007	¥499,950 million	¥500,000 million	Capital increase by privatization

Total Number of Stocks (As of September 30, 2015)

Total number of issuable stocks	2,400,000,000
Total number of issued stocks	600,000,000
Current period shareholder	one entity

Condition of Stocks (As of September 30, 2015)

1) Types of stocks issued

Issued stocks	Type	Number of issued stocks	Contents
	Common stock	600,000,000	—

2) Major shareholder

Name	Investments in Japan Post Insurance Co., Ltd.		Investments by major shareholders in Japan Post Insurance Co., Ltd.	
	Number of stocks held	Ratio of number of stocks held	Number of stocks held	Ratio of number of stocks held
Japan Post Holdings Co., Ltd.	600,000,000	100%	—	—

Shareholder (As of September 30, 2015)

Name	Address of main place of business or sales	Paid-in capital or investment	Business outline	Date of establishment	Percentage of owned shares included in the total number of shares
Japan Post Holdings Co., Ltd.	Chiyoda-ku, Tokyo	¥3,500,000 million	Management of the Japan Post Group	January 23, 2006	100%

Directors and Executive Officers

Males: 31 Females: 3 (Ratio of female directors/executive officers: 8.8%)

(As of September 28, 2015)

Directors

Director	Masami Ishii	President, CEO Representative Executive Officer
Director	Toshihisa Minakata	Deputy President Representative Executive Officer
Director	Shoji Awakura	Deputy President Representative Executive Officer
Director	Akira Anzai	
Director	Taizo Nishimuro	President & CEO, Japan Post Holdings Co., Ltd.
Director	Masaharu Hino	Attorney-at-law
Director	Fumiaki Furuya	Chairman, NIPPON SHUPPAN HANBAI INC.
Director	Kiyomi Saito	CEO, JBond Totan Securities Co., Ltd.
Director	Shin Yoshidome	Senior Adviser, Daiwa Institute of Research Business Innovation Ltd.
Director	Shinji Hattori	Chairman & Group CEO, Seiko Holdings Corporation
Director	Michiko Matsuda	Adviser, IHI Enviro Corporation

Note: Six directors (Masaharu Hino, Fumiaki Furuya, Kiyomi Saito, Shin Yoshidome, Shinji Hattori and Michiko Matsuda) are Outside Directors as specified in Article 2, Item 15 of the Corporate Law.

Executive Officers

		In charge of respective departments
President, CEO Representative Executive Officer	Masami Ishii	
Deputy President Representative Executive Officer	Toshihisa Minakata	Secretariate
Deputy President Representative Executive Officer	Shoji Awakura	Sales Promotion Department and Regional Headquarters
Senior Managing Executive Officer	Kiyoshi Ido	IT Systems Planning Department
Senior Managing Executive Officer	Kazuhide Kinugawa	Sales Quality Control Department, Customer Services Department, General Affairs Department, Human Resources Department, Human Resources Development Department, Sales Training Department and Credit Department
Senior Managing Executive Officer	Masaaki Horigane	Actuarial and Accounting Department, Policy Assessment Department and Claim Payment Services Department
Senior Managing Executive Officer	Mitsuhiko Uehira	Product Planning Department, Sales Planning Department and Sales Training Department
Managing Executive Officer	Kiyotaka Fujimoto	Investment Planning Department, Investment Management Department and Loan Department
Managing Executive Officer	Yoshito Horiie	Business Process Planning Department, Underwriting Department, Policy Administration Department and Claims-Related Services Department
Managing Executive Officer	Tetsuya Senda	Corporate Planning Department, Public Relations Department and Cash-Flow and Expense Management Department
Managing Executive Officer	Yasuhiro Sadayuki	Compliance Control Department, Risk Management Department and Legal Affairs Department
Managing Executive Officer	Yoshihiko Ido	Senior General Manager, Sales Promotion Department
Managing Executive Officer	Yoshio Inoue	Internal Audit Department
Executive Officer	Tomoaki Nara	Senior General Manager, Investment Planning Department
Executive Officer	Shinji Ando	Senior General Manager, Compliance Control Department
Executive Officer	Nobuyasu Kato	Senior General Manager, Policy Assessment Department
Executive Officer	Yasutaka Nishikawa	Senior General Manager, Kinki Regional Headquarters
Executive Officer	Osamu Kubo	Senior General Manager, Tokyo Regional Headquarters
Executive Officer	Yasuaki Hironaka	
Executive Officer	Hiromichi Udagawa	Senior General Manager, Kanto Regional Headquarters
Executive Officer	Hiroshi Nagaso	Senior General Manager, Tokai Regional Headquarters
Executive Officer	Hisao Nishikawa	Senior General Manager, Chugoku Regional Headquarters
Executive Officer	Masato Kawagoe	Senior General Manager, Kyushu Regional Headquarters
Executive Officer	Yasumi Suzukawa	Senior General Manager, Claim Payment Services Department
Executive Officer	Kieko Onoki	General Manager, Sendai Administration Services Center
Executive Officer	Toru Onishi	Senior General Manager, Corporate Planning Department and Affiliated Business Office